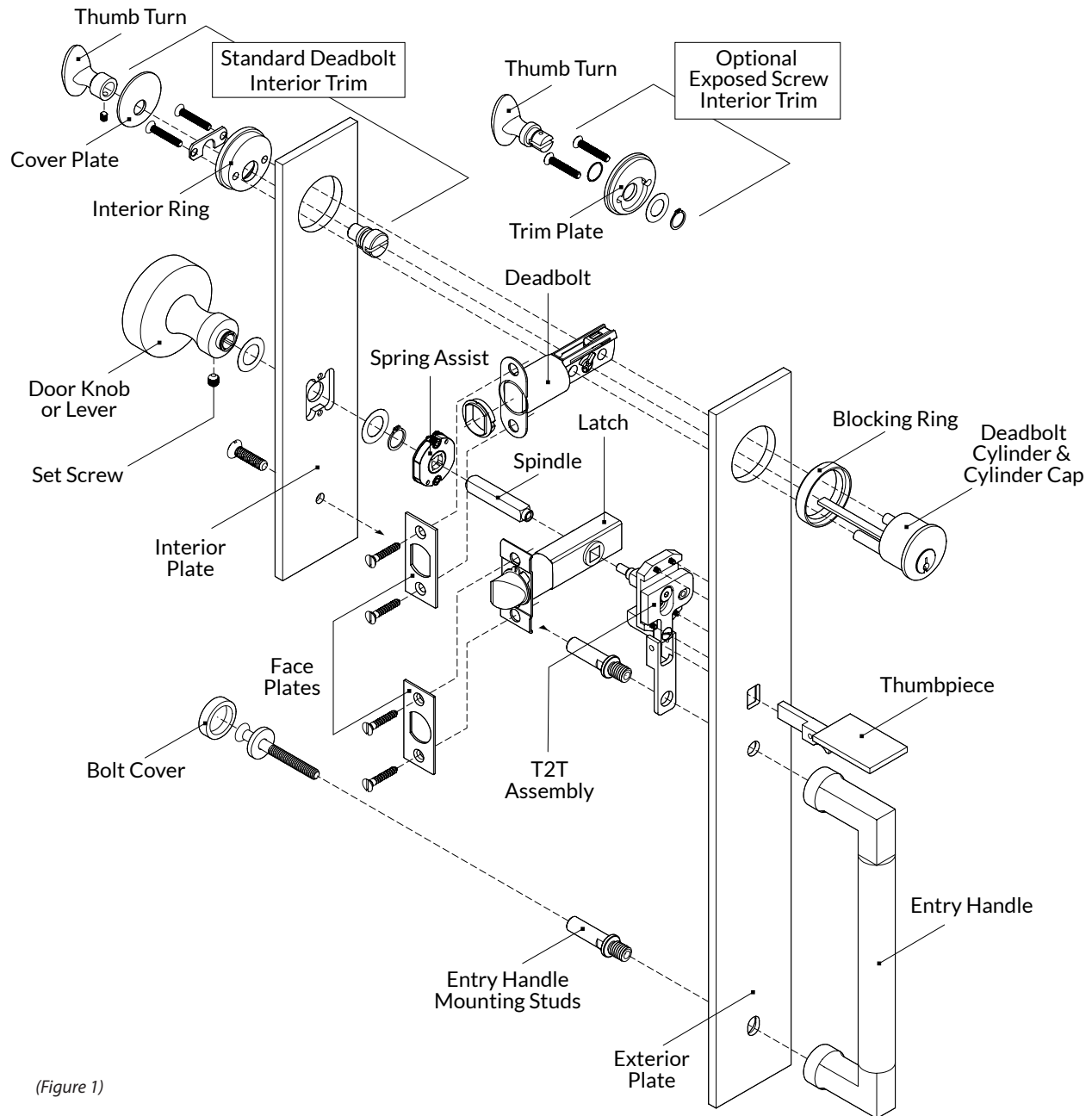




**WATER STREET.**  
JAMESTOWN NEW YORK

## TTKL-EN - TUBULAR ENTRY HANDLE SET LATCH X AUXILIARY DEADBOLT



(Figure 1)

### ENTRY SET

A tubular escutcheon entry handle set consists of a passage latch coupled with an auxiliary deadbolt located above the latch.

- The exterior plate has an entry handle, a thumbpiece, an auxiliary deadbolt key cylinder with blocking ring, and the T2T assembly. It will also include two entry handle mounting studs.
- The interior plate has a knob or lever, deadbolt trim with a thumb turn, and exposed through bolts.

- The interior of the door will also include a bolt cover with mounting plate and through bolt.
- An optional exposed screw trim is available for the interior plate. This is a bit easier to install than the standard trim but the screws will be visible. The door preparation remains the same.



**WATER STREET**  
JAMESTOWN NEW YORK

## TTKL-EN - TUBULAR ENTRY HANDLE SET LATCH X AUXILIARY DEADBOLT

### PREPARE DOOR

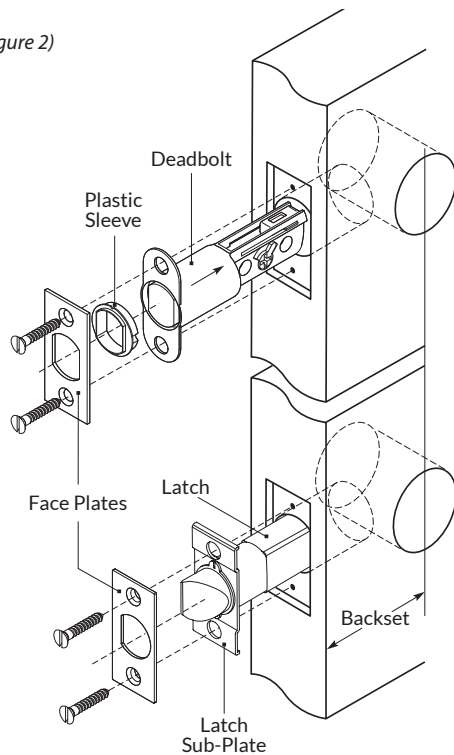
1. Prepare the door according to the template provided.
2. Use the face plates to mark the screw locations on the edge of the door, then drill the pilot holes for the screws. (Figure 2)

### INSTALL THE LATCH & DEADBOLT

3. Install the passage latch sub-plate onto the latch. Rotate the latch bolt to the desired direction based on handing, then insert the assembly into the door. (Figure 2)
4. Install the latch face plate and secure with the face plate screws.
5. Next, install the deadbolt, plastic sleeve and deadbolt face plate with the screws provided.

Do not over tighten the screws on either face plate or binding may occur.

(Figure 2)



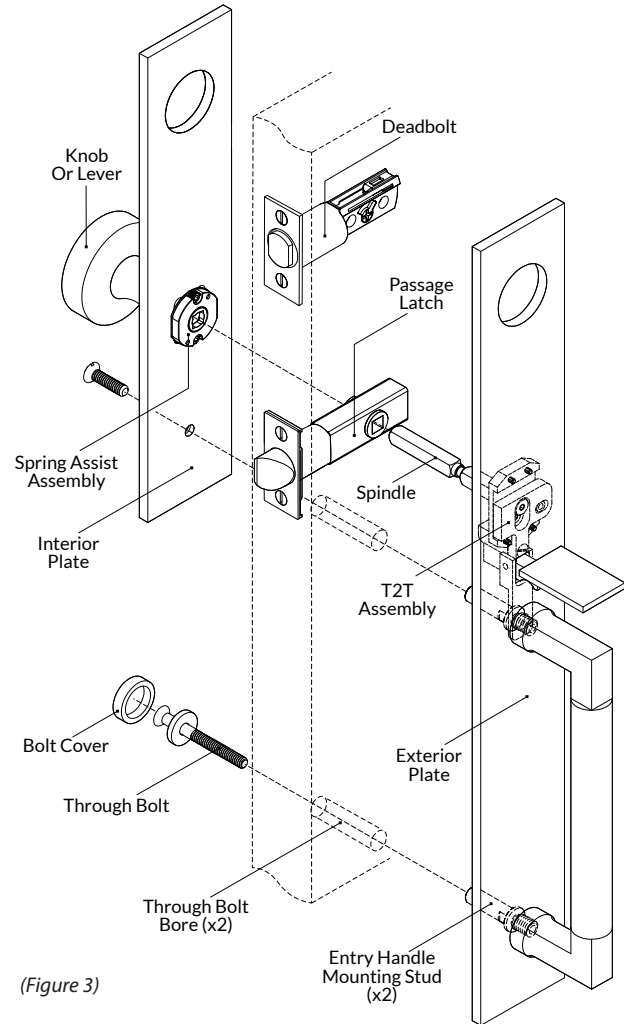
### T2T ASSEMBLY

The "Thumbpiece to Tubular" mechanism comes pre-installed on your exterior plate. This unit transfers the vertical motion of the thumbpiece to a rotary motion on the spindle.

### INSTALL THE ESCUTCHEON PLATES

6. Screw the spindle onto the T2T assembly until fully seated, then back it off at least 1/4 turn, until it rotates freely and the set screw slot is on the bottom, facing the floor. Position the exterior plate on the door so that the spindle passes through the latch hub.
7. Fit the exterior plate onto the door surface, passing the spindle through the passage latch hub and the two entry handle mounting studs through the bore holes.

8. Insert the lower through bolt into the bolt cover mounting plate, then install into the lower entry handle mounting stud. (Figure 3)
9. Next, position the interior plate on the door. Fit the spring assist unit and the knob or lever onto the spindle. Install the through bolt by screwing into the upper entry handle mounting stud.



(Figure 3)

10. If any binding occurs with the latch, the plates may have dropped slightly. Adjust by loosening the through bolts and lifting up on the plates. Once the binding is relieved, firmly tightening the bolts.
11. Install the bolt cover onto its mounting plate and hand tighten.
12. Secure the interior knob or lever to the spindle by firmly tightening the set screw.

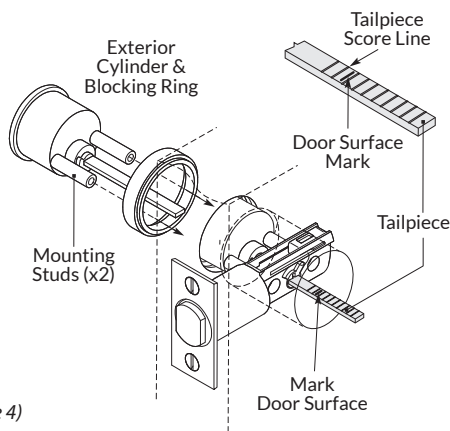


## TTKL-EN - TUBULAR ENTRY HANDLE SET LATCH X AUXILIARY DEADBOLT

### DEADBOLT CYLINDER PREPARATION

13. Fit the deadbolt cylinder and blocking ring on the exterior escutcheon, sliding the tailpiece through the deadbolt hub. The mounting hubs on the cylinder will pass through the deadbolt body. With this assembly in place, mark the length of the tailpiece at the point it reaches the interior face of the door.

14. Find the tailpiece score line to the inside of the door surface mark and cut the tailpiece at that line. You may need to further trim this tailpiece so that it fits into the thumb turn actuator without binding. (Figure 4)



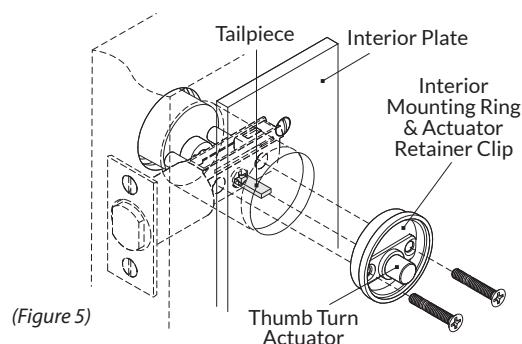
(Figure 4)

### STANDARD INTERIOR TRIM

Note: The interior mounting plate assembly is typically shipped assembled. You may need to disassemble the thumb turn and face plate prior to installation. Simply loosen the thumb turn set screw and slide off the actuator. Do not disassemble the retaining clip from the actuator.

15. Position the interior mounting ring assembly into the interior plate. Make sure the thumb turn actuator is oriented with the tailpiece slot horizontal and the set screw dimple facing downward. The tailpiece must fit in the slot.

16. Secure this assembly to the deadbolt cylinder mounting studs using the two machine screws provided. (Figure 5)



(Figure 5)

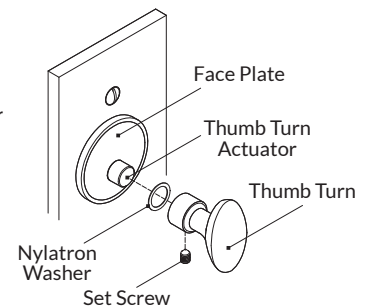
### TEST THE DEADBOLT FUNCTION

Test for free movement of the thumb turn actuator. If the activator seems tight, the tailpiece stem may need to be trimmed down to relieve binding.

Insert the key in the cylinder and test the operation. If the key cannot be removed when in the locked position, remove the cylinder and flip the tailpiece 180°. Replace the cylinder and test again.

### FINISH INSTALLATION

17. Position the face plate into the mounting ring assembly. Slide the nylon washer and the thumb turn over the thumb turn actuator stem, then secure with the set screw. (Figure 6)

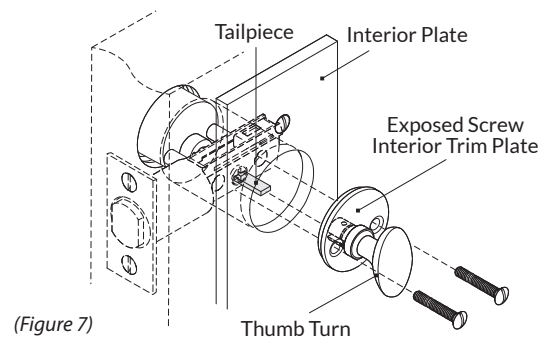


(Figure 6)

### EXPOSED SCREW INTERIOR TRIM

15. Position the trim plate assembly into the interior plate. Orient the slot in the thumbpiece horizontally so that the tailpiece fits.

16. Secure this assembly to the deadbolt cylinder mounting studs using the two machine screws provided. (Figure 7)



(Figure 7)



**WATER STREET.**  
JAMESTOWN NEW YORK

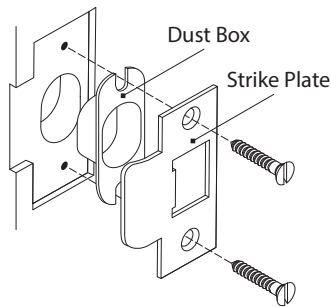
## TTKL-EN - TUBULAR ENTRY HANDLE SET LATCH X AUXILIARY DEADBOLT

### DOOR JAMB - LATCH STRIKE

17. Measure the jamb to determine the location the latch bolt strikes when the door is fully closed. Using the strike plate templates provided, prepare the door jamb to accept the dust boxes and strike plates.

Note: Determine if the latch strike plate is a full lip or T-strike, and the handing required. Mortise the jamb accordingly.

18. Install the dust box and face plate with the screws provided. Make sure the face plate sits flush with the jamb surface; deepen the cavities as needed. After installation, if the latch does not fully engage with the strike, loosen the screws and adjust. (Figure 9)



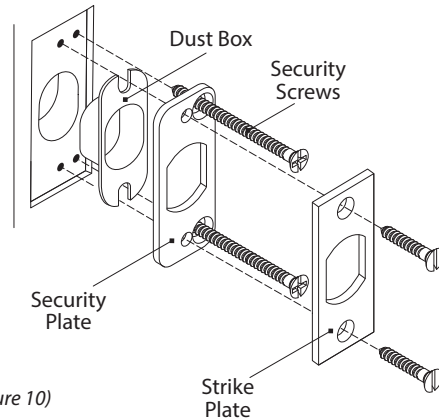
(Figure 9)

### DOOR JAMB - DEADBOLT STRIKE

19. Measure the jamb to determine the location the deadbolt strikes when the door is fully closed. Using the strike plate template provided, prepare the door jamb to accept the dust box, security plate, and the strike plate.

20. Begin the installation by inserting the dust box and the security plate in the door cavity. Secure by firmly installing the two security screws into the door jamb.

21. Finish the installation by attaching the strike plate as shown. (Figure 10)



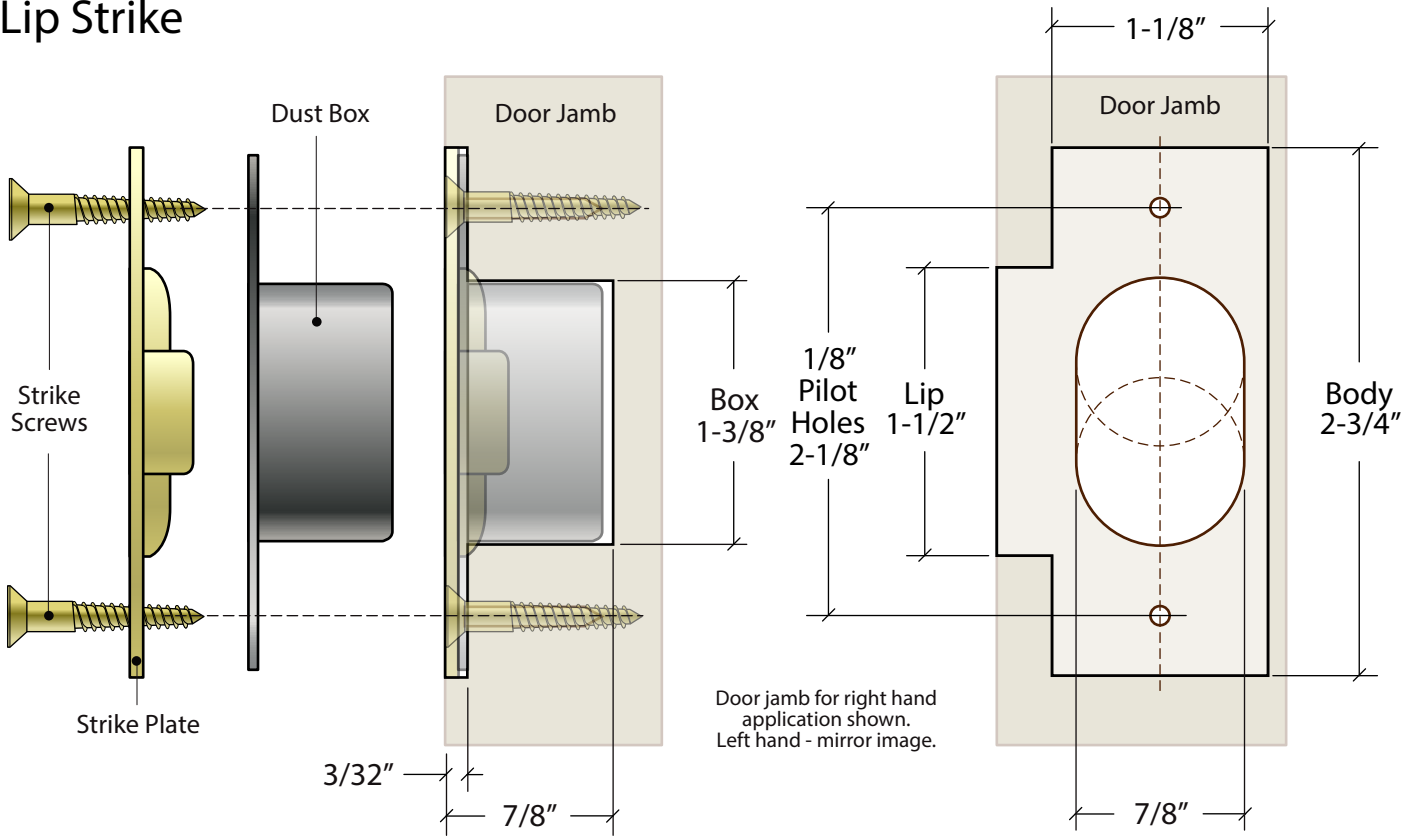
(Figure 10)

After installation, if the bolt does not fully engage with the strike, loosen the screws and adjust.

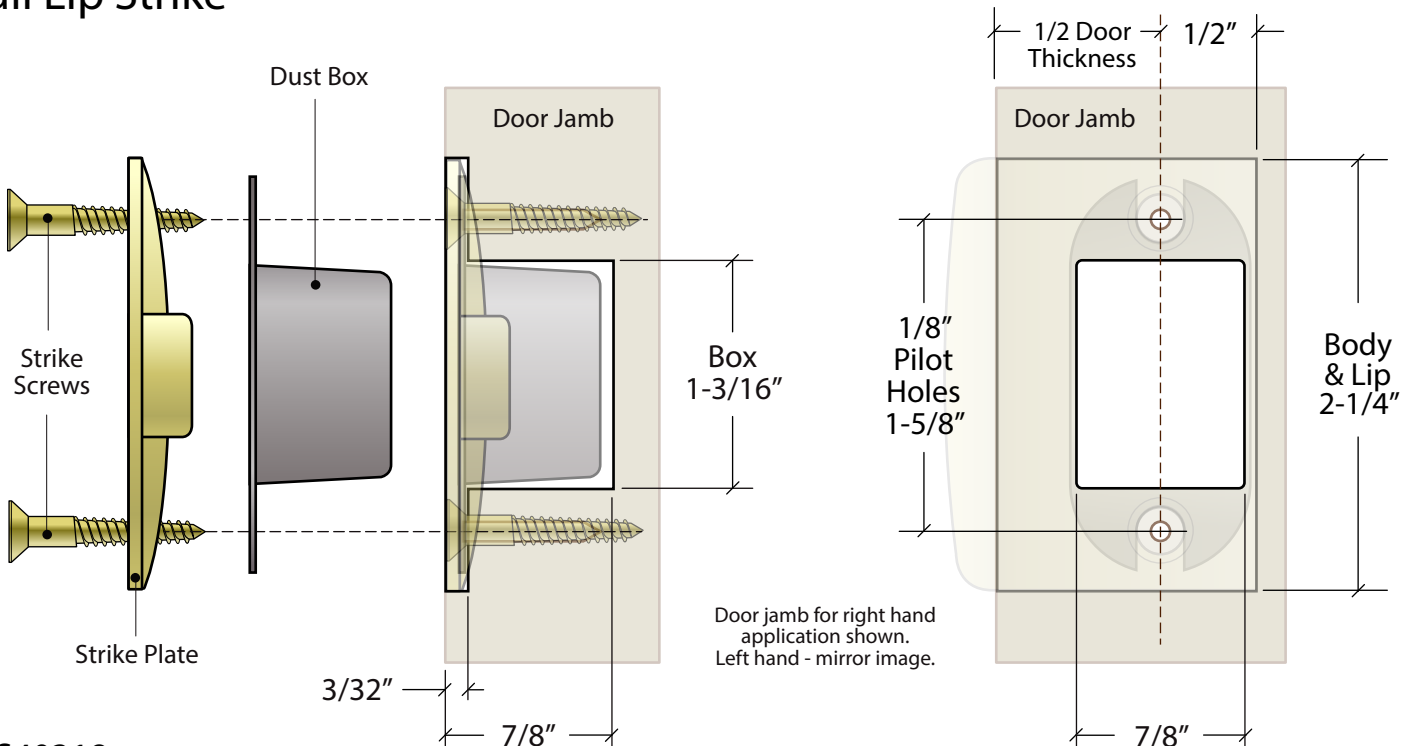


WATER STREET

## T-Lip Strike



## Full Lip Strike



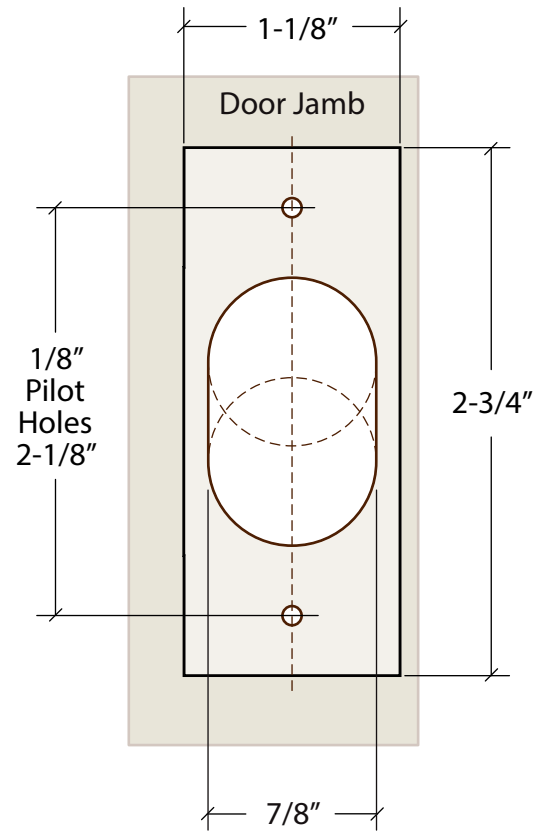
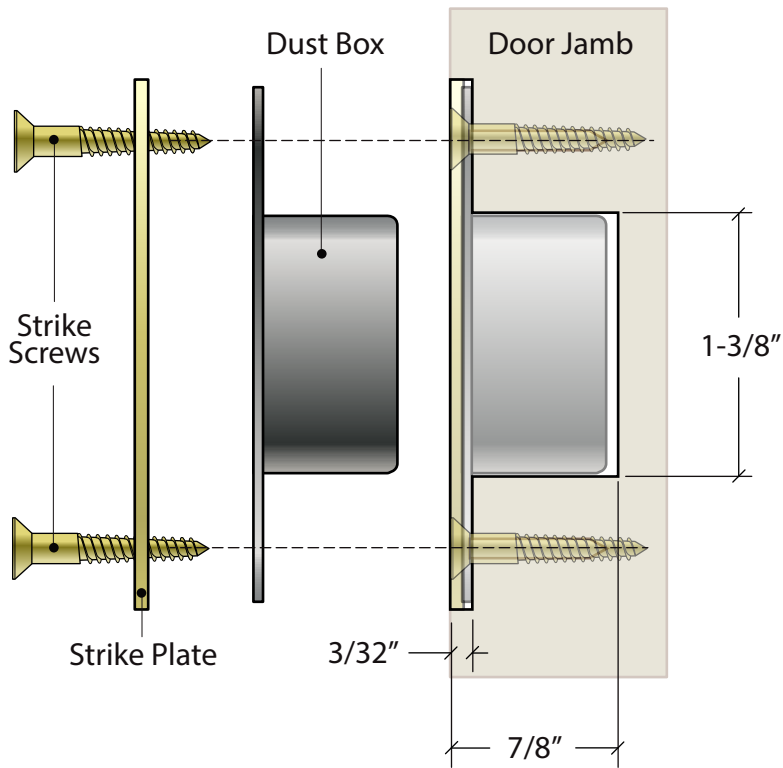
WS40318  
Tubular Strike Templates

Proprietary And Confidential  
© WSB Hardware, Inc. 2022

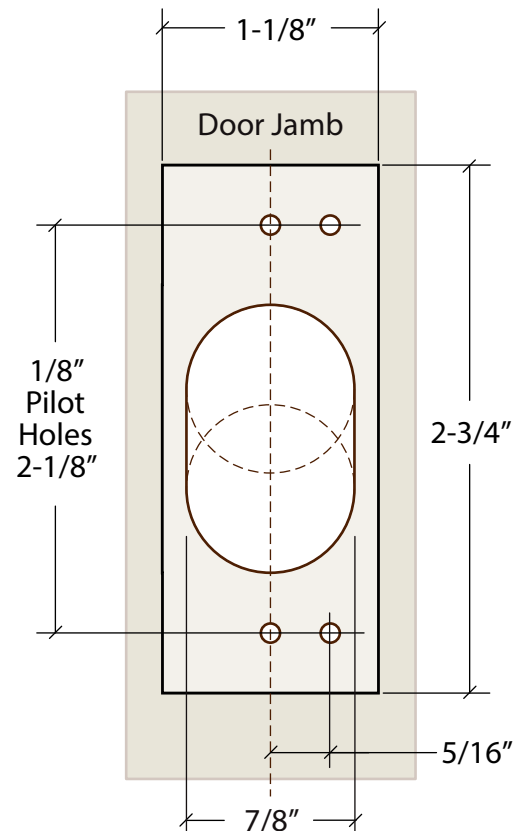
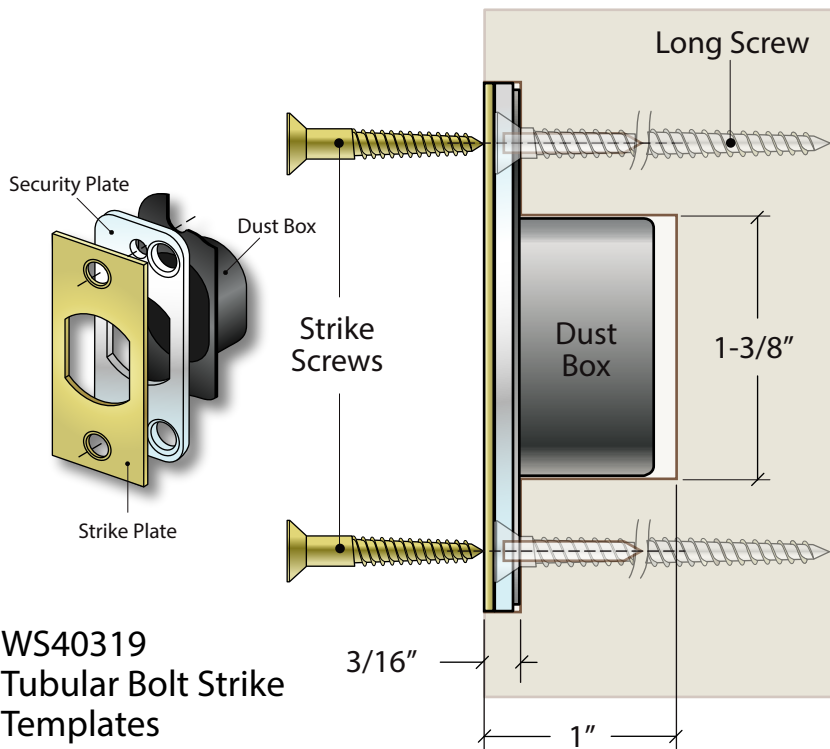


WATER STREET

## Mortise Bolt Strike



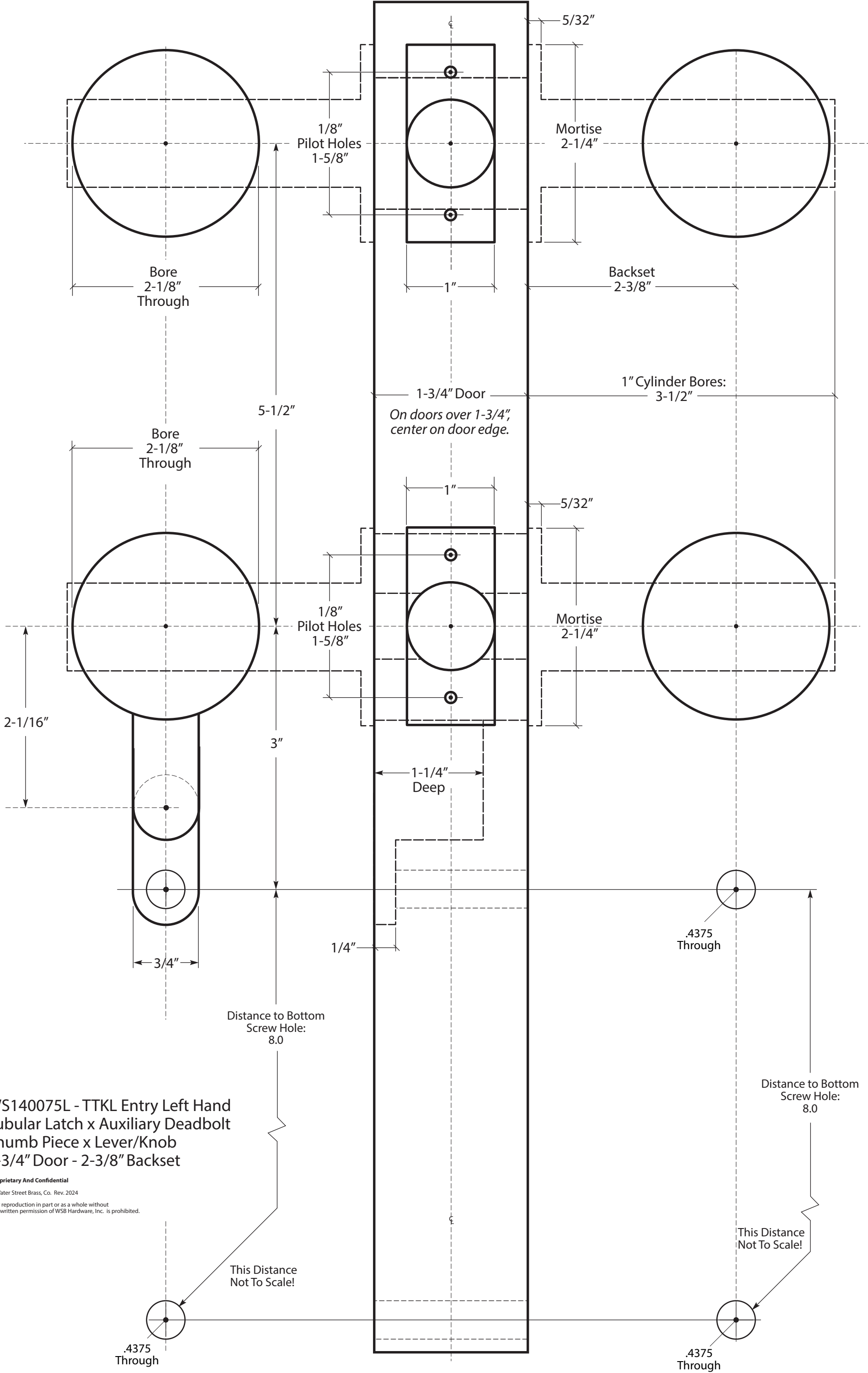
## Auxiliary Deadbolt Strike



WS40319  
Tubular Bolt Strike  
Templates

Door Face  
Exterior

Door Face  
Interior



WS140075L - TTKL Entry Left Hand  
Tubular Latch x Auxiliary Deadbolt  
Thumb Piece x Lever/Knob  
1-3/4" Door - 2-3/8" Backset

Proprietary And Confidential  
© Water Street Brass, Co. Rev. 2024

Any reproduction in part or as a whole without  
the written permission of WSB Hardware, Inc. is prohibited.

This Distance  
Not To Scale!

This Distance  
Not To Scale!

.4375  
Through

.4375  
Through

Distance to Bottom  
Screw Hole:  
8.0

Distance to Bottom  
Screw Hole:  
8.0

1-3/4" Door  
*On doors over 1-3/4",  
center on door edge.*

1" Cylinder Bores:  
3-1/2"

Mortise  
2-1/4"

Backset  
2-3/8"

1/8" Pilot Holes  
1-5/8"

Bore  
2-1/8"  
Through

Bore  
2-1/8"  
Through

1/8" Pilot Holes  
1-5/8"

Mortise  
2-1/4"

1-1/4"  
Deep

1/4"

.4375  
Through

2-1/16"

3"

3/4"

5-1/2"

5/32"

5/32"

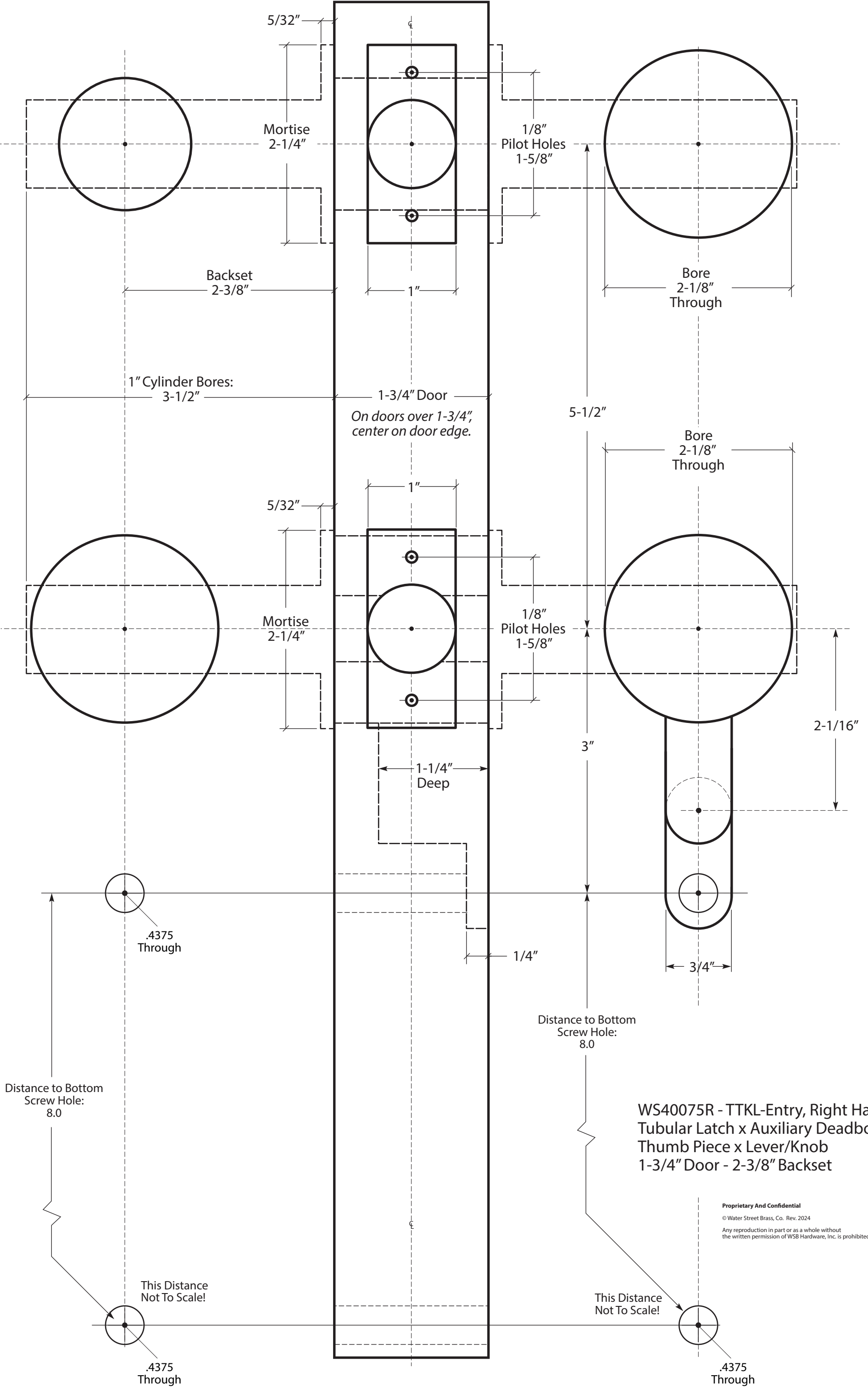
ϕ

ϕ

ϕ

Door Face Interior

Door Face Exterior



**WS40075R - TTKL-Entry, Right Hand  
Tubular Latch x Auxiliary Deadbolt  
Thumb Piece x Lever/Knob  
1-3/4" Door - 2-3/8" Backset**

**Proprietary And Confidential**  
© Water Street Brass, Co. Rev. 2024  
Any reproduction in part or as a whole without  
the written permission of WSB Hardware, Inc. is prohibited.

This Distance  
Not To Scale!

This Distance  
Not To Scale!

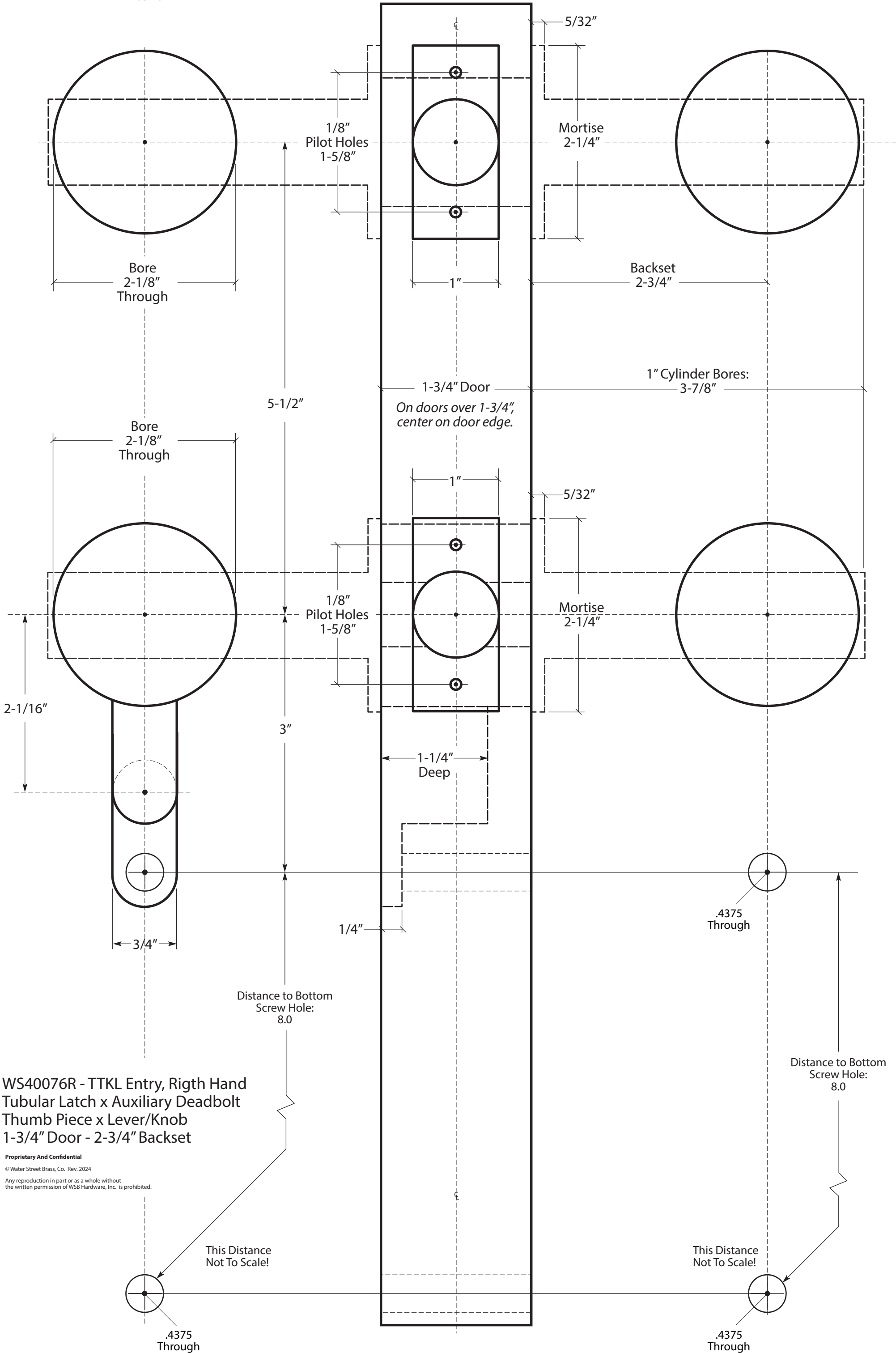
.4375  
Through

.4375  
Through



Door Face  
Exterior

Door Face  
Interior



WS40076R - TTKL Entry, Righth Hand  
Tubular Latch x Auxiliary Deadbolt  
Thumb Piece x Lever/Knob  
1-3/4" Door - 2-3/4" Backset

Proprietary And Confidential

© Water Street Brass, Co. Rev. 2024

Any reproduction in part or as a whole without  
the written permission of WSB Hardware, Inc. is prohibited.

This Distance  
Not To Scale!

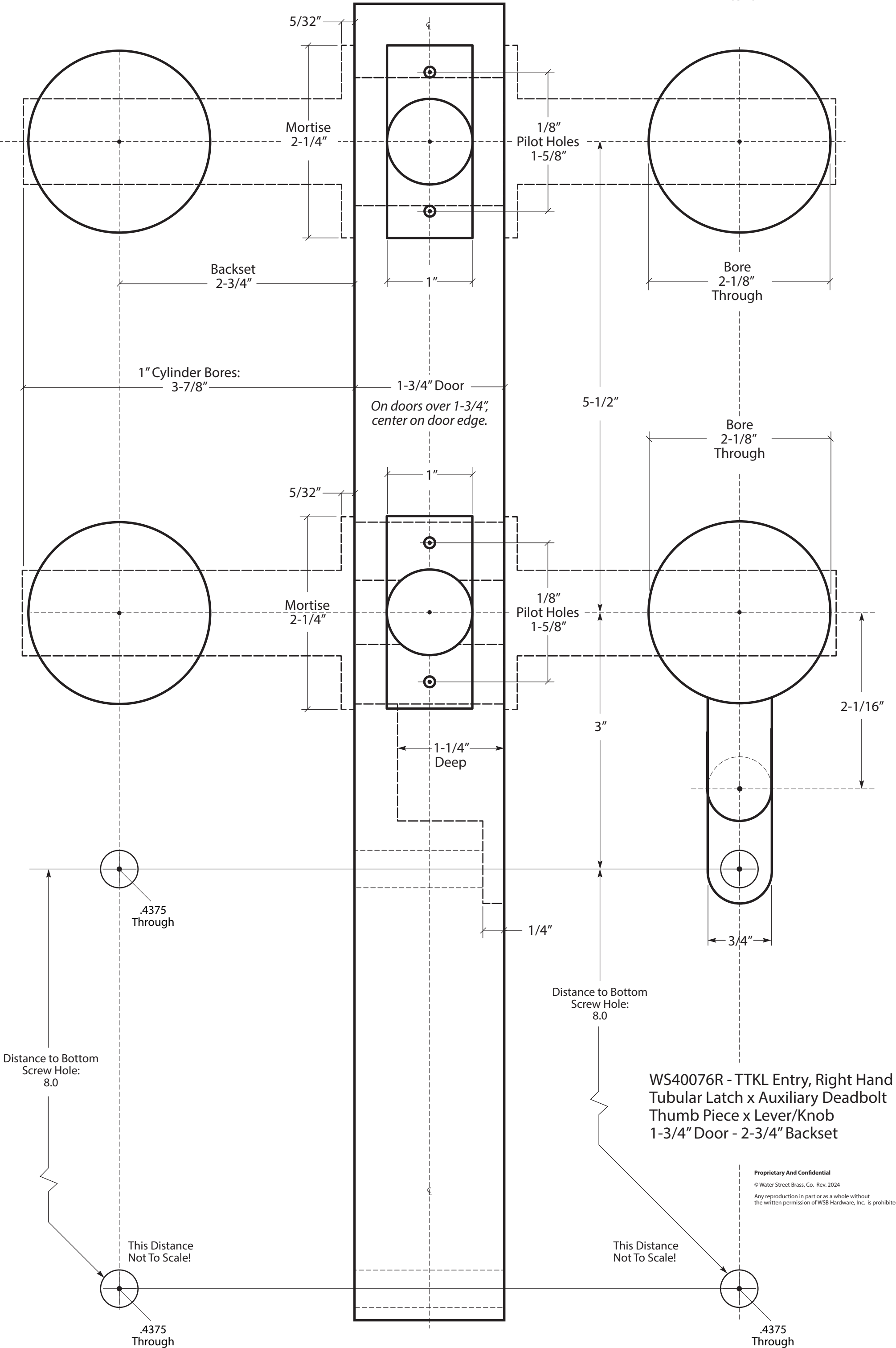
This Distance  
Not To Scale!

.4375  
Through

.4375  
Through

Door Face Interior

Door Face Exterior



WS40076R - TTKL Entry, Right Hand  
 Tubular Latch x Auxiliary Deadbolt  
 Thumb Piece x Lever/Knob  
 1-3/4" Door - 2-3/4" Backset

Proprietary And Confidential  
 © Water Street Brass, Co. Rev. 2024  
 Any reproduction in part or as a whole without  
 the written permission of WSB Hardware, Inc. is prohibited.